

ÍNDICE

Minus One: Indicaciones metronómicas	6
1. <i>Tempo de Vals</i>	8
2. <i>La Canción del Marino</i>	12
3. <i>La Caja de Música</i>	16
4. <i>El Valle y la Montaña</i>	20
5. <i>Rondeau</i>	24
6. <i>Perpetuo Mobile</i>	28
7. <i>Viento de Otoño</i>	32
8. <i>La Locomotora</i>	36
9. <i>Una Estrella Fugaz</i>	40
10. <i>Danza de los Elfos</i>	44
11. <i>Arcoíris</i>	48
12. <i>Concertino Barroco</i>	52

1. Tempo de Vals

Ejercicios Prácticos

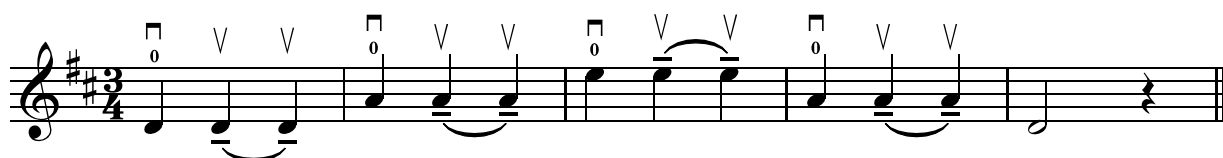
1 Distribución de Arco



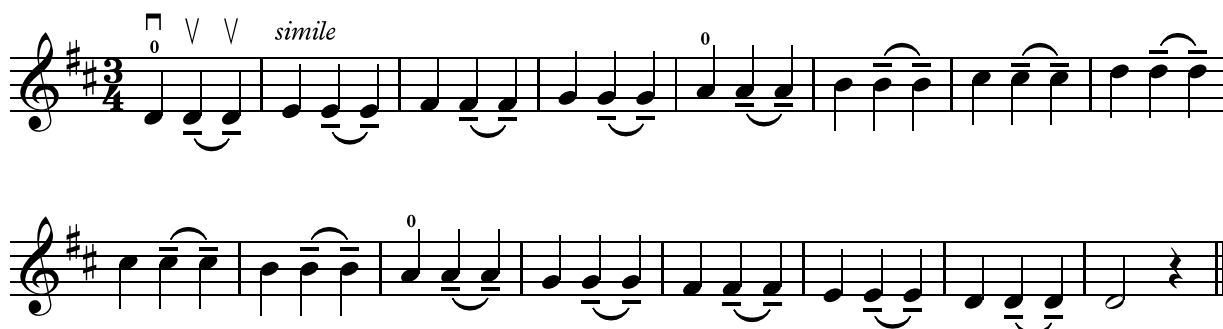
2 Escala de Re M



3 Distribución de Arco



4 Escala de Re M



6

Distribución de Arco

Two staves of musical notation in 2/4 time, key signature of three sharps (F#, C#, G#). The first staff begins with a natural sign and a '0' above the first note. The second staff concludes with a double bar line.

7

Escala de La M

Three staves of musical notation in 2/4 time, key signature of three sharps (F#, C#, G#). The first staff starts with a natural sign and a '0' above the first note. The second and third staves include fingerings (4, 4, 0) and accents (V) above notes.

8

Escala de La M

Three staves of musical notation in 2/4 time, key signature of three sharps (F#, C#, G#). The first staff starts with a natural sign and a '0' above the first note. The second and third staves include fingerings (4, 4, 0) and accents (V) above notes.



Allegretto



Musical score for guitar in G major (one sharp) and 2/4 time. The score consists of six staves of music, each starting with a measure number (3, 6, 11, 16, 21, 26). The piece is marked *f* (forte) for the first two staves and *mf* (mezzo-forte) for the last four. The notation includes various chords, triplets, and slurs. Fingering numbers (0, 1, 3, 4) are indicated above the notes. A 'V' symbol above a note indicates a vibrato. A double bar line with repeat dots is present at the end of the sixth staff.

12. Concertino Barroco

Ejercicios Prácticos

1 Distribución de Arco

2 Escala de Re M

3 Arpeggio de Re M

4 Arpeggio de Re m



 Pistas
56-60

Allegro moderato

Musical score for Violin in G major, 4/4 time, Allegro moderato. The score consists of six staves of music, numbered 1 through 16. The key signature has one sharp (F#) and the time signature is 4/4. The piece begins with a forte (*f*) dynamic and includes various musical notations such as triplets, slurs, and dynamic markings like *mf*, *mp*, and *p*. The score concludes with a crescendo and a final forte (*f*) dynamic.